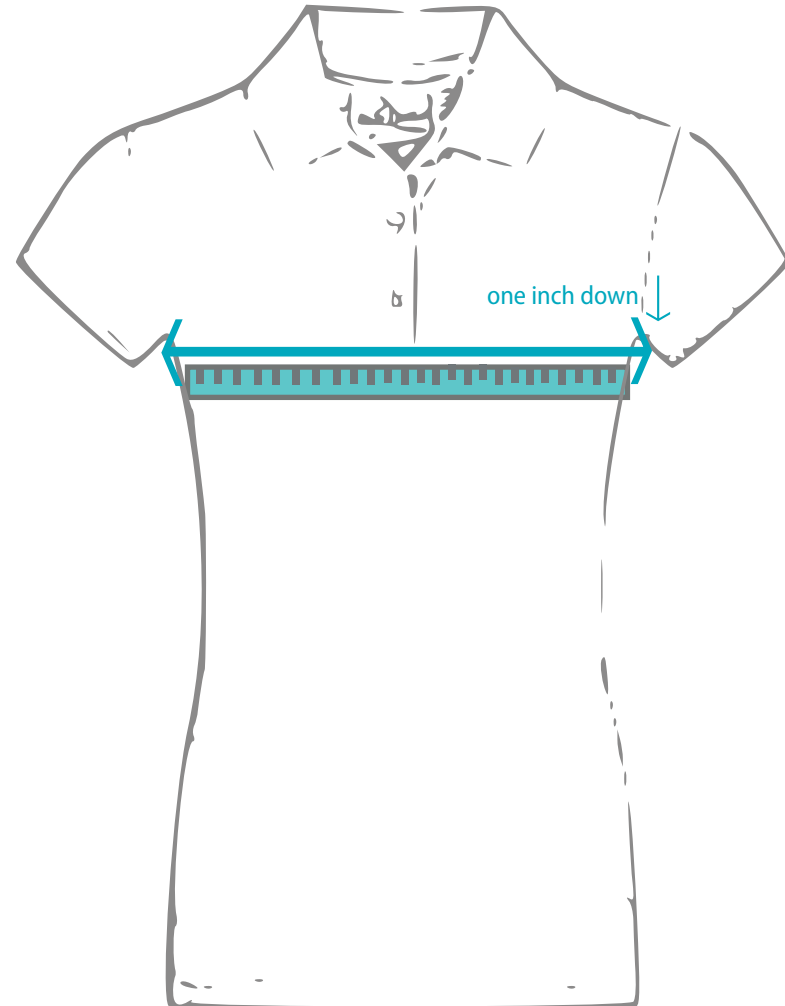
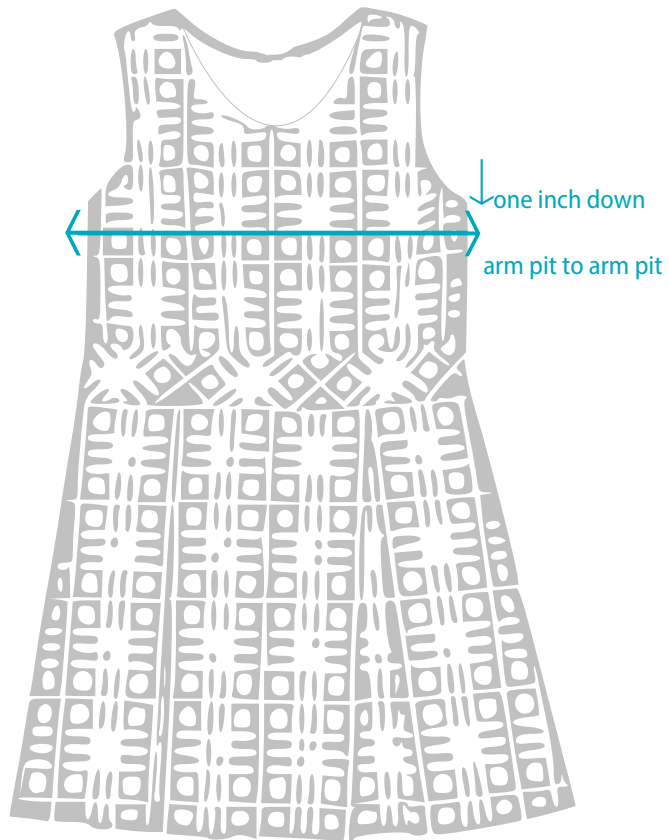


HOW TO MEASURE FOR FIT

Start one inch down from the arm pit and then measure from arm pit to arm pit. Measure the FRONT CHEST ONLY



* YOU MAY ALSO LAY A POLO SHIRT DOWN ON A FLAT SURFACE AND MEASURE ARM PIT TO ARM PIT FRONT ONLY